



Catalyzing Municipal Climate Adaptation

County of Alameda

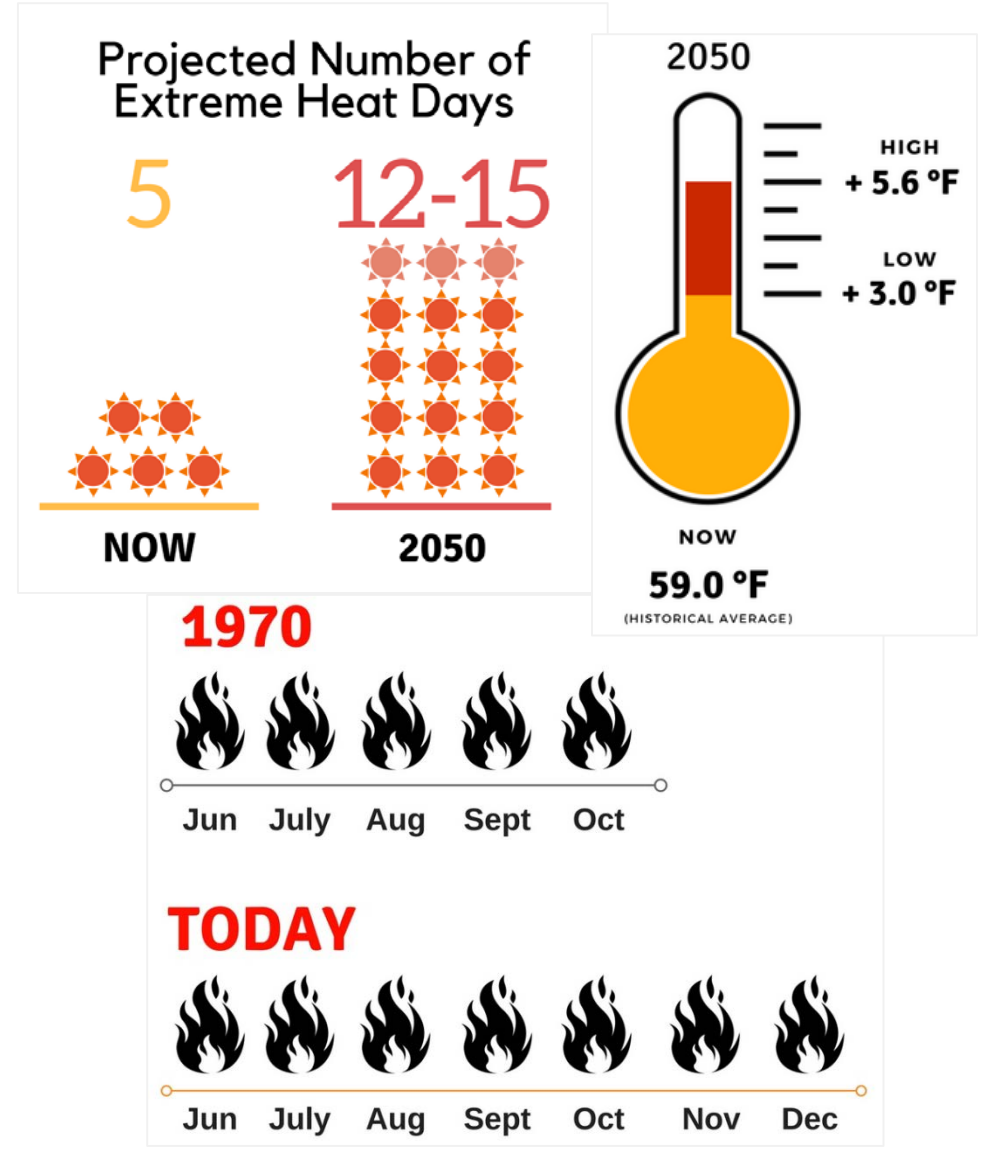
Climate Corps 17-18

Developing Adaptation Workshops

Setting the Context for Climate Adaptation

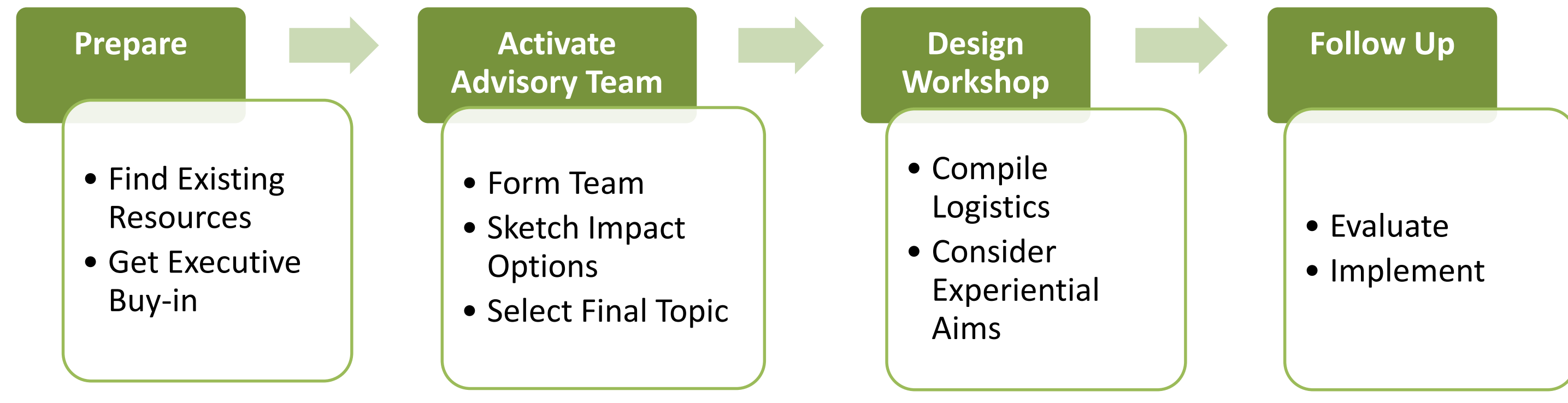
Alameda County is already experiencing the effects of climate change. A heat wave caused 6 deaths in the Bay Area in September 2017, and more extreme heat days are expected. The Sonoma wildfires in October 2017 led to the poorest air quality recorded in the Bay Area in the last two decades, and the frequency and intensity of wildfires is expected to increase. These impacts will have a number of negative effects on people. Without action, climate impacts like extreme temperatures and poor air quality will harm children, elderly, and the most vulnerable populations within the County.

Alameda County Projections



Workshop Purpose and Design

With the support of a technical assistance grant provided by the State Coastal Conservancy, the Office of Sustainability at Alameda County designed an adaptation workshop that departments and agencies within the County could use to catalyze adaptation implementation. The purpose of these workshops is to go **beyond simply planning** for climate change by **taking concrete action** to protect communities from any negative climate impacts. The workshop planning and design phases are outlined below:



Two Pilot Workshops

Workshop 1—Planning Department: Extreme Heat and Heat Islands



- Explored built environment strategies to reduce the impact of heat such as cool roofs, cool pavement, and trees/vegetation
- Focused on unincorporated communities with highest heat vulnerability
- Strategies will inform, where appropriate, amendments to General Plan, Community Climate Action Plan, and Design Guidelines

Workshop 2—Public Health Department: Poor Air Quality from Wildfire Smoke

- Explored effects of projected increases in heat and wildfire risk on the respiratory health of department's clients
- Identified best ways to communicate with clients when there is poor air quality
- Post-workshop working group will finalize material and process



For Further Inquiry and Development

Scale of Collaboration
 → What scale(s) of internal/external jurisdictional collaboration yields most effective interventions for different types of climate impacts?

Funding Mechanism
 → What kinds of policy/market levers will incentivize financial investment in adaptation measures?

These questions are aimed towards the broader community of climate adaptation professionals to flag key gaps in current adaptation work.



After spending two years working on the University of California's Carbon Neutrality by 2025 initiative, I wanted to explore how municipalities were pursuing climate adaptation. This fall, I will pursue a masters degree at the Yale School of Forestry & Environmental Studies to study how equity, adaptation, mitigation, and resilience are most effectively integrated.

A heartfelt thank you to my site supervisor, Sarah Church, for her guidance throughout. My deepest gratitude to my co-fellows Camyle Allen, Jimmy Dunn, Sam Hill-Cristol, Kev Horng, and Catherine Willett for their constant support, advice, and dedication. Thank you as well to the Sustainability staff and project partners Anna Lee (Public Health Dept.), Sophie McGuinness (Planning Dept.), and Kelly Malinowski (State Coastal Conservancy).

Acknowledgements:

Pallavi Sherikar

