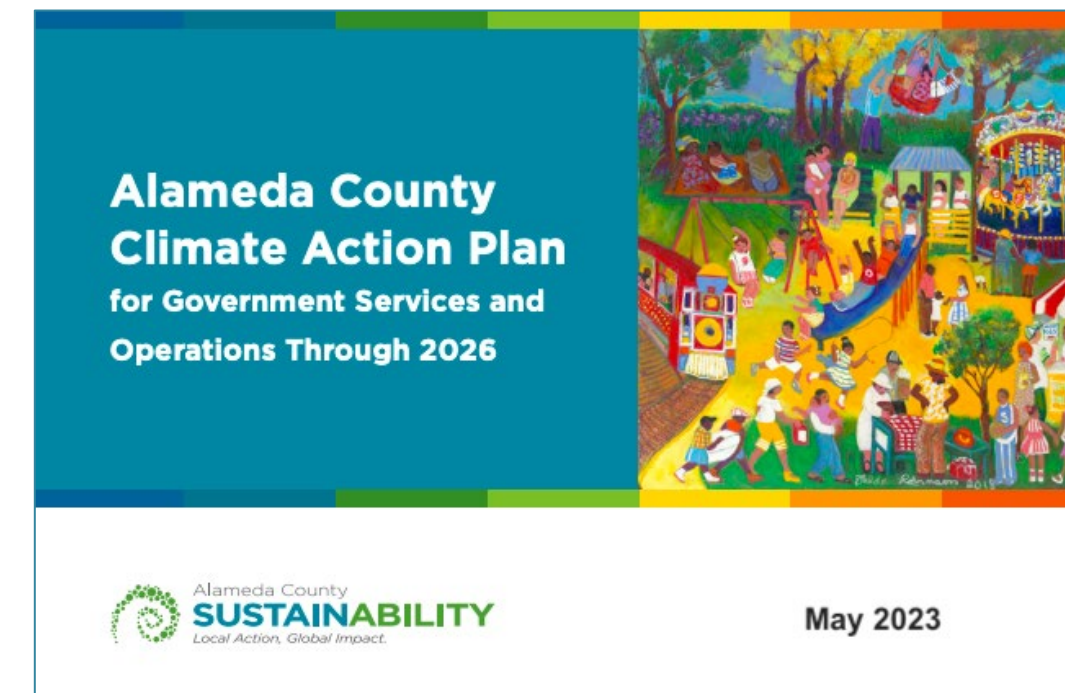


Implementing a Telework Timecode

In 2019, employee commutes were the largest source of emissions from County operations (22,987 mt CO₂e). The COVID-19 pandemic accelerated the adoption and acceptance of remote and hybrid work. Implementing a new timecode to track telework hours will be an important step toward understanding the impact of evolving work arrangements.



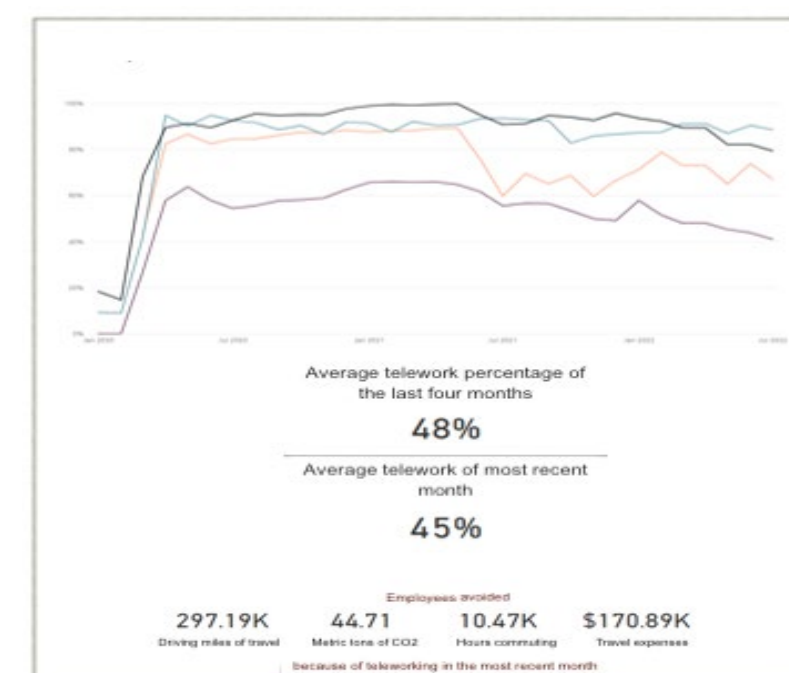
Implementing a telework timecode is part of the County's strategy to reduce emissions from its own operations.

Project Goals

- Track progress on reducing employee commutes and achieving emissions reduction goals
- Identify opportunities to improve accessibility to telework for eligible employees
- Share metrics internally for planning purposes, such as making informed decisions about future office space and energy needs

Fellowship Objectives

- Ensure the change in process for reporting work hours is user-friendly to facilitate the collection of high-quality data
- Develop a data dashboard to display telework trends by agency and emissions reductions Countywide



Sample data dashboard using mock data

Work in Progress

Instruction Document

- ❖ Developing an instruction document for over 9,500 County employees to support accurate time reporting

From Sunday 04/16/2023 to Saturday 04/29/2023														Total Time Reporting Code	Type	
Sun	Mon	Tue	Wed	Thu	Fri	Sat	Sun	Mon	Tue	Wed	Thu	Fri	Sat			
4/16	4/17	4/18	4/19	4/20	4/21	4/22	4/23	4/24	4/25	4/26	4/27	4/28	4/29			
	8.00	8.00			8.00			8.00	8.00			8.00		48.00	REG - Regular	Hours
			8.00	8.00						8.00	8.00			32.00	TEL - Telework	Hours

Most regular work duties performed at an approved alternate work site will be reported as telework hours, as shown on this timesheet mock-up.

Microsoft Power BI

- ❖ Identifying and obtaining the appropriate license and database for Microsoft Power BI, the platform selected for sharing the data dashboard

Next Steps

To track metrics in real-time on remote work at the organizational level, cooperation with all employees is key.

- Incorporate feedback on the instruction document from internal stakeholders with knowledge of different work arrangements available to the County's diverse work teams
- Design a data dashboard to visualize relevant metrics
 - Use available resources, such as employee commute surveys, to assess the benefits of telework in relation to emissions reductions

Carol Lee, 2022-2023 Climate Corps Fellow

UC Berkeley, B.A. in Economics

Pursuing a career in advancing equitable climate solutions

Acknowledgements

Thank you to the team at the Office of Sustainability—Emily Sadigh, Jency James, Karen Cook, Sarah Church, and Rachel Kippen—including my co-fellows Erin, Ellie, Samira, and Kameron

