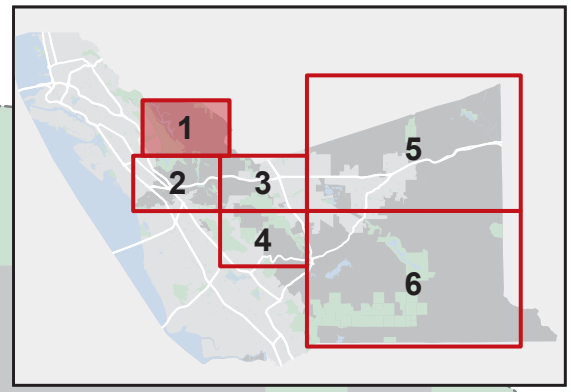


FIGURE 3-3a: MAP 1
Alameda County
Public Works Agency
Unincorporated Areas
Bicycle Plan
2012



Attractors & Generators

| | |
|-------------------|--|
| Amtrak Station | Hospital/Medical Center |
| BART Station | Senior/Community Center |
| ACE Station | Library |
| School/University | Other Major Employer (with 300+ employees) |

Unincorporated Areas Bicycle Network

| | | |
|----------|----------|--------------------------------------|
| Existing | Proposed | Class I |
| Existing | Proposed | Class II |
| Existing | Proposed | Class IIIA - Rideway |
| Existing | Proposed | Class IIIB - Wide Curb Lane |
| Existing | Proposed | Class IIIC - Rural Route |
| Existing | Proposed | Bikeways & Trails By Others |
| Existing | Proposed | ACTC 2006 Countywide Bicycle Network |

Major Retail/Commercial Area

Unincorporated Areas

Incorporated Areas

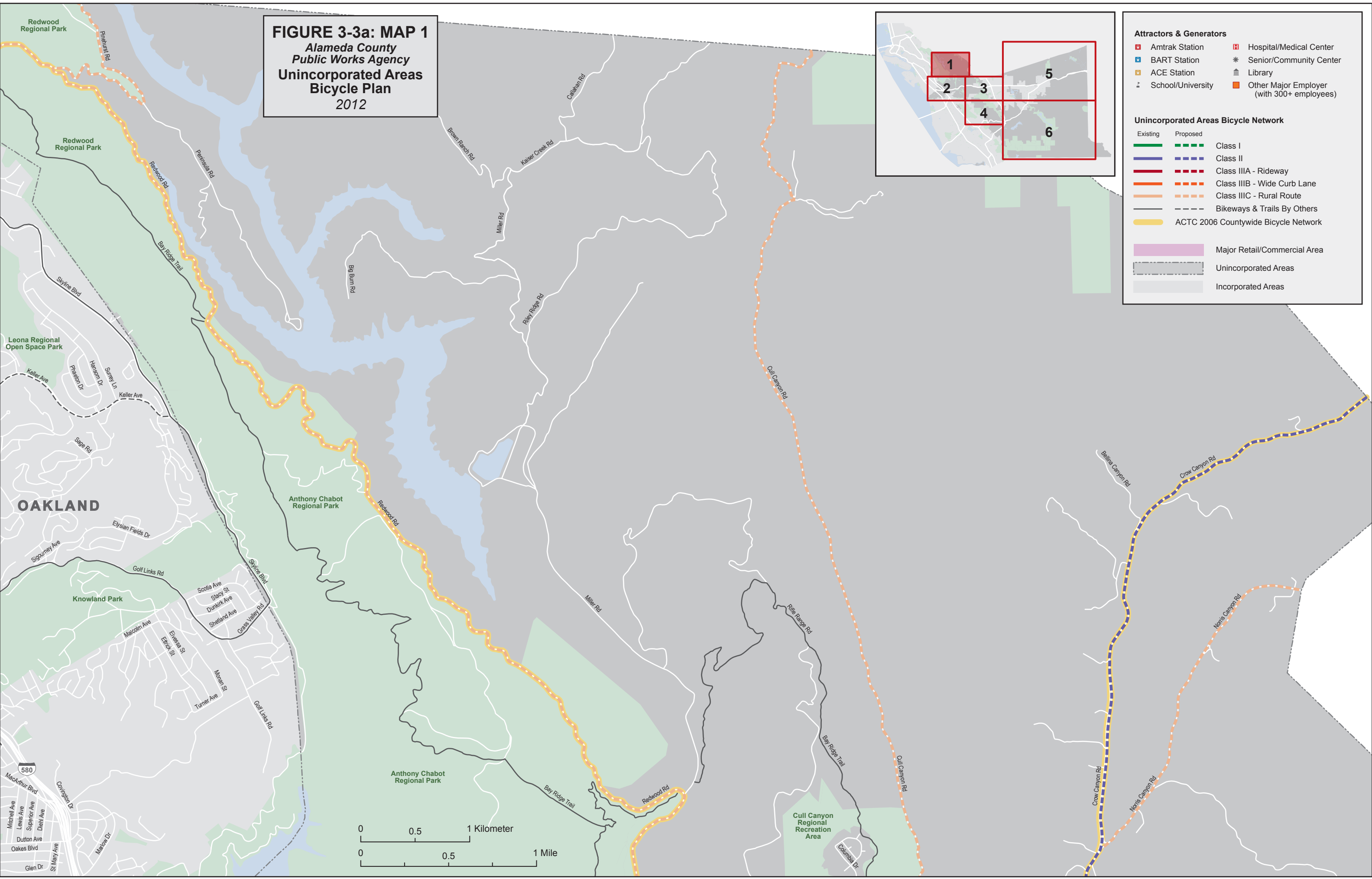


FIGURE 3-3b: MAP 2
Alameda County
Public Works Agency
Unincorporated Areas
Bicycle Plan
2012

- Attractors & Generators**
- Amtrak Station
 - BART Station
 - ACE Station
 - School/University
 - Hospital/Medical Center
 - Senior/Community Center
 - Library
 - Other Major Employer (with 300+ employees)

- Unincorporated Areas Bicycle Network**
- Existing Class I
 - Proposed Class I
 - Class II
 - Class II
 - Class IIIA - Rideway
 - Class IIIA - Rideway
 - Class IIIB - Wide Curb Lane
 - Class IIIB - Wide Curb Lane
 - Class IIIC - Rural Route
 - Class IIIC - Rural Route
 - Bikeways & Trails By Others
 - ACTC 2006 Countywide Bicycle Network
- Major Retail/Commercial Area
- Unincorporated Areas
- Incorporated Areas

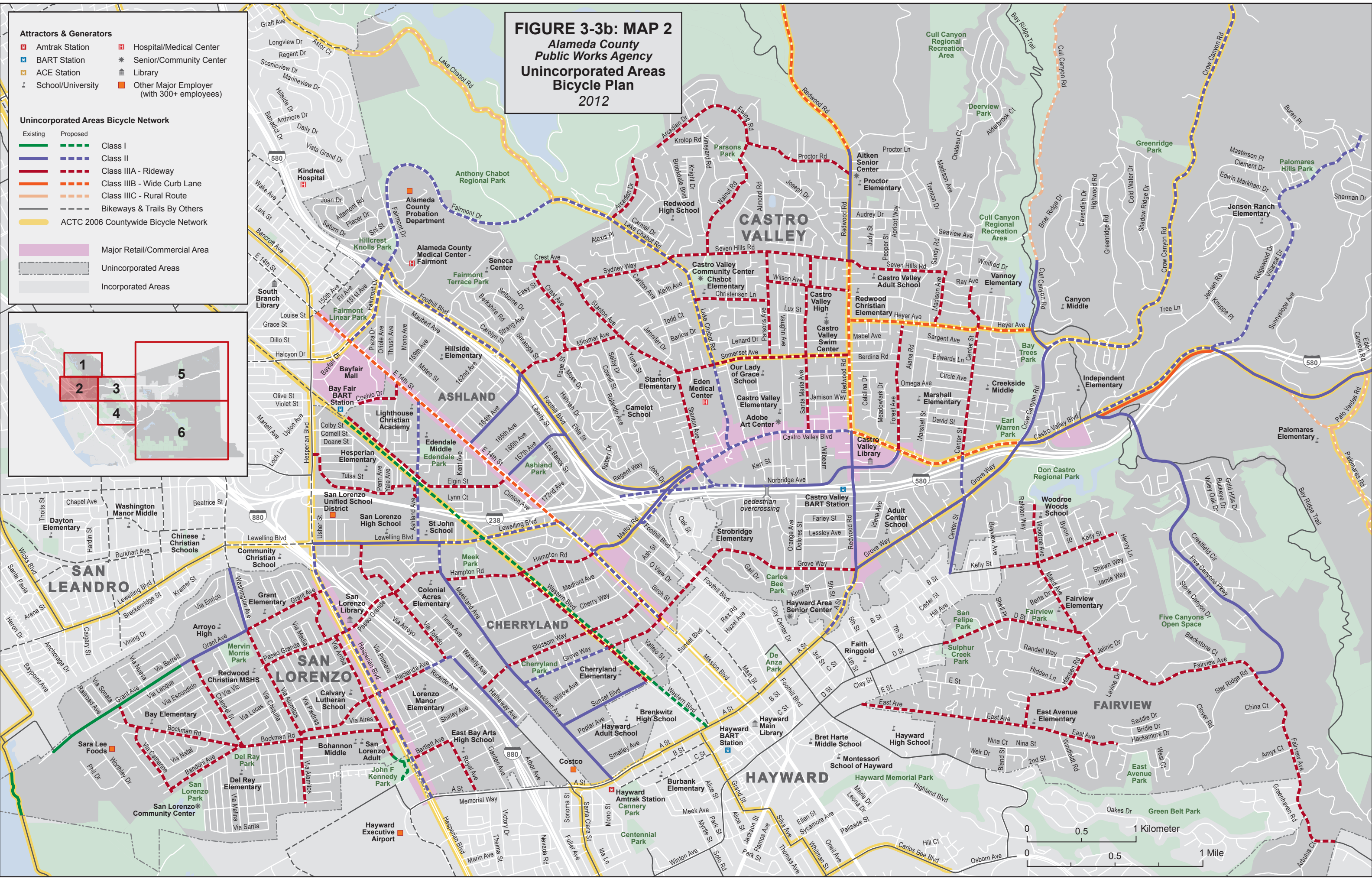
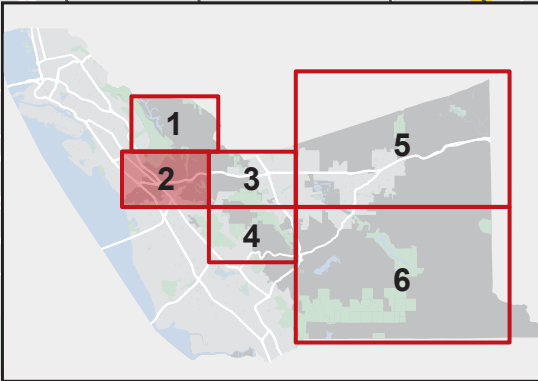
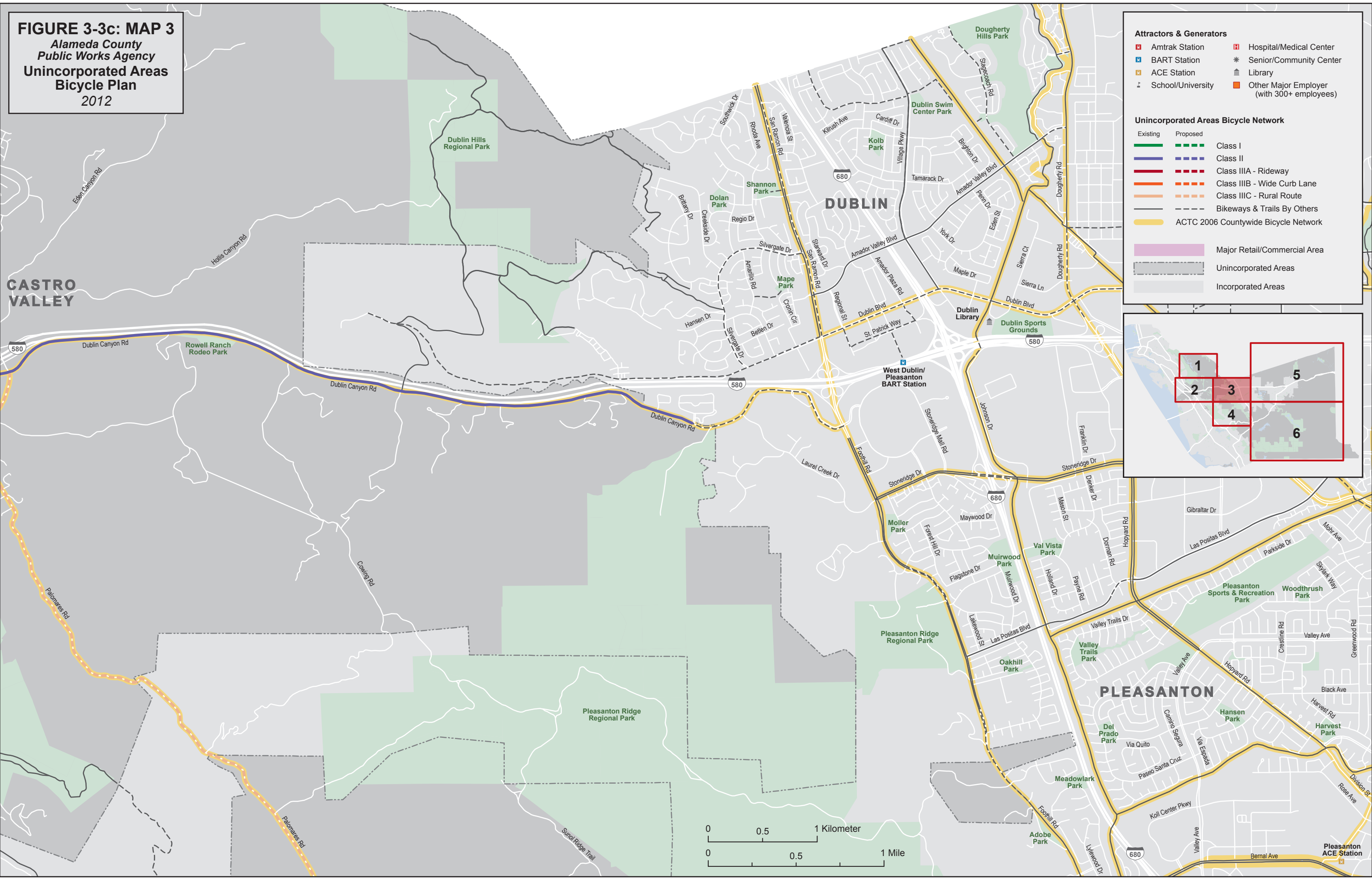


FIGURE 3-3c: MAP 3
Alameda County
Public Works Agency
Unincorporated Areas
Bicycle Plan
2012



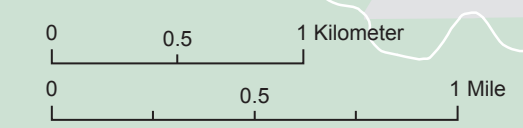
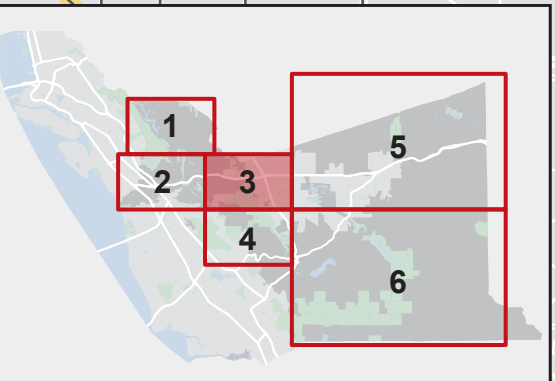
Attractors & Generators

- Amtrak Station
- BART Station
- ACE Station
- School/University
- Hospital/Medical Center
- Senior/Community Center
- Library
- Other Major Employer (with 300+ employees)

Unincorporated Areas Bicycle Network

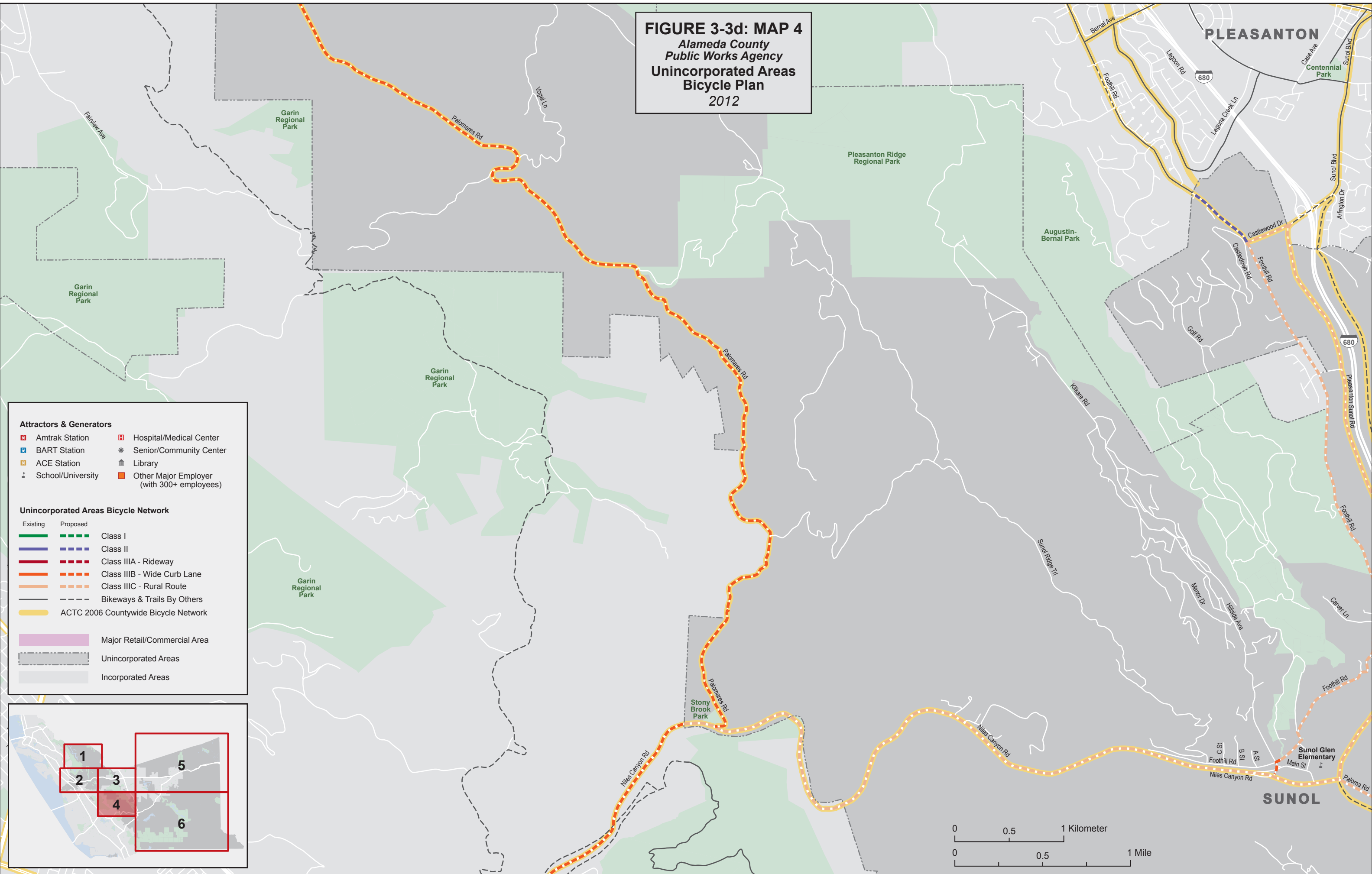
| Existing | Proposed | Class |
|----------|----------|--------------------------------------|
| | | Class I |
| | | Class II |
| | | Class IIIA - Rideway |
| | | Class IIIB - Wide Curb Lane |
| | | Class IIIC - Rural Route |
| | | Bikeways & Trails By Others |
| | | ACTC 2006 Countywide Bicycle Network |

Major Retail/Commercial Area
 Unincorporated Areas
 Incorporated Areas



Pleasanton ACE Station

FIGURE 3-3d: MAP 4
Alameda County
Public Works Agency
Unincorporated Areas
Bicycle Plan
2012



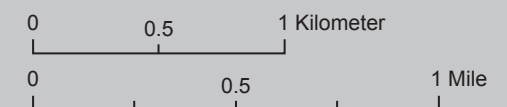
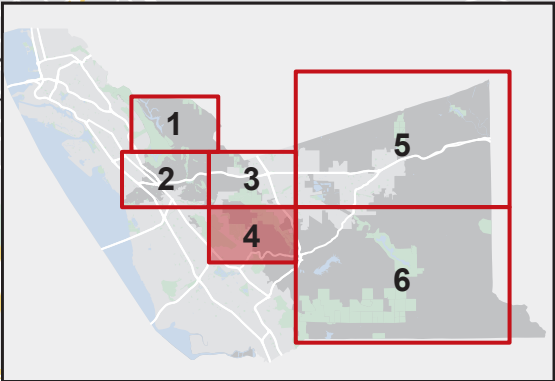
Attractors & Generators

| | |
|-------------------|--|
| Amtrak Station | Hospital/Medical Center |
| BART Station | Senior/Community Center |
| ACE Station | Library |
| School/University | Other Major Employer (with 300+ employees) |

Unincorporated Areas Bicycle Network

| | | |
|--------------------------|-----------------------------|--------------------------------------|
| Existing | Proposed | Class I |
| Class II | Class IIIA - Rideway | Class IIIB - Wide Curb Lane |
| Class IIIC - Rural Route | Bikeways & Trails By Others | ACTC 2006 Countywide Bicycle Network |

Major Retail/Commercial Area
 Unincorporated Areas
 Incorporated Areas



- Attractors & Generators**
- Amtrak Station
 - BART Station
 - ACE Station
 - School/University
 - Hospital/Medical Center
 - Senior/Community Center
 - Library
 - Other Major Employer (with 300+ employees)

- Unincorporated Areas Bicycle Network**
- | | | |
|----------|----------|--------------------------------------|
| Existing | Proposed | |
| | | Class I |
| | | Class II |
| | | Class IIIA - Rideway |
| | | Class IIIB - Wide Curb Lane |
| | | Class IIIC - Rural Route |
| | | Bikeways & Trails By Others |
| | | ACTC 2006 Countywide Bicycle Network |

- -
 -
- Major Retail/Commercial Area
Unincorporated Areas
Incorporated Areas

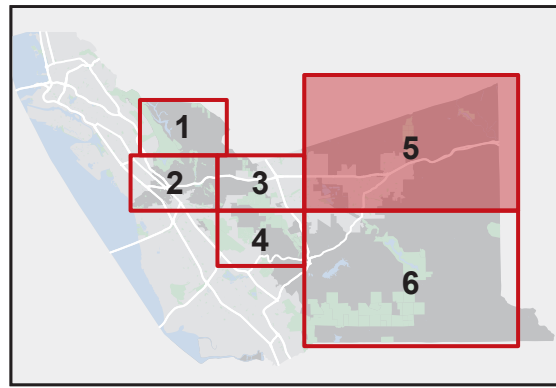
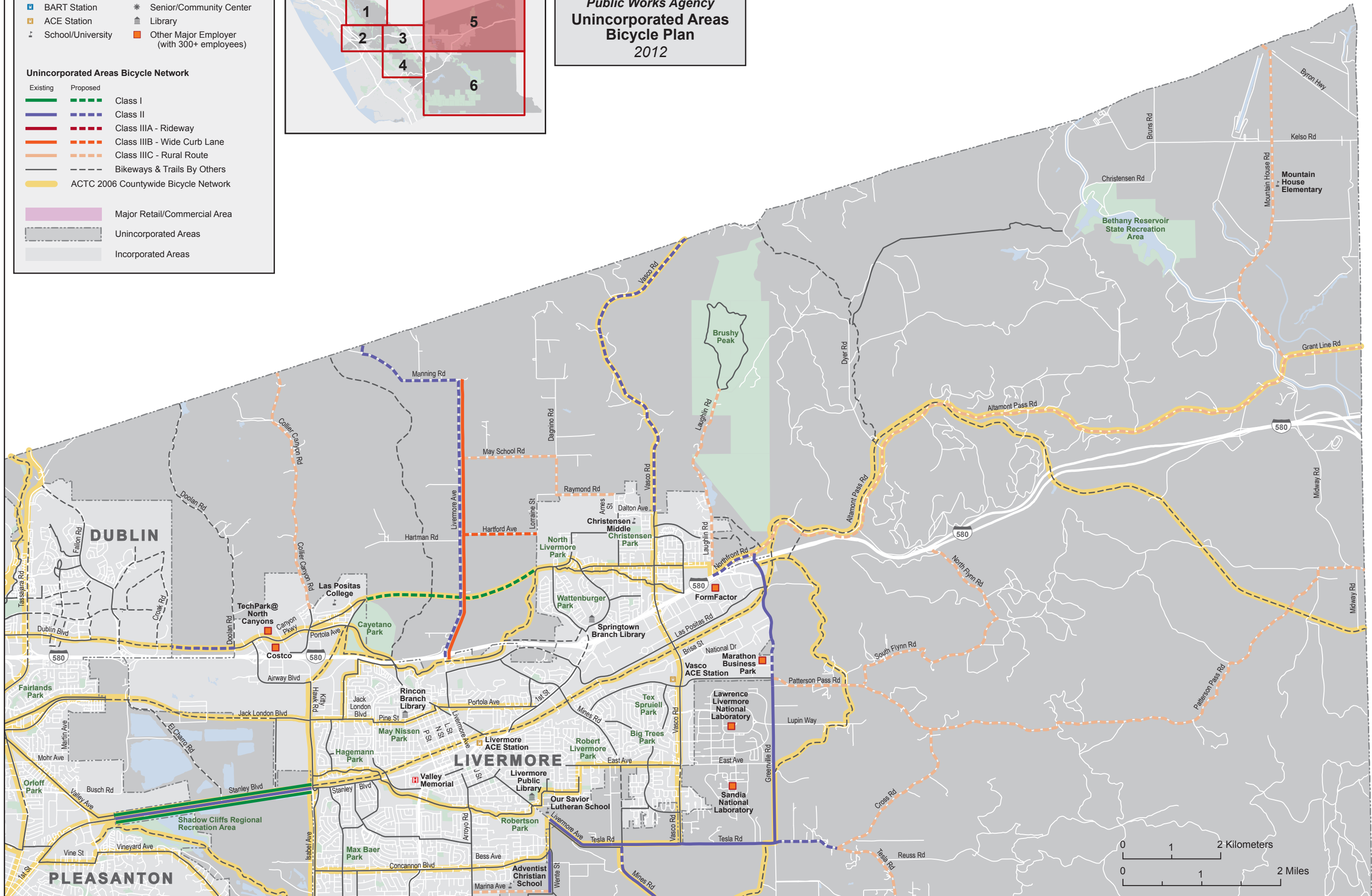


FIGURE 3-3e: MAP 5
Alameda County
Public Works Agency
Unincorporated Areas
Bicycle Plan
2012



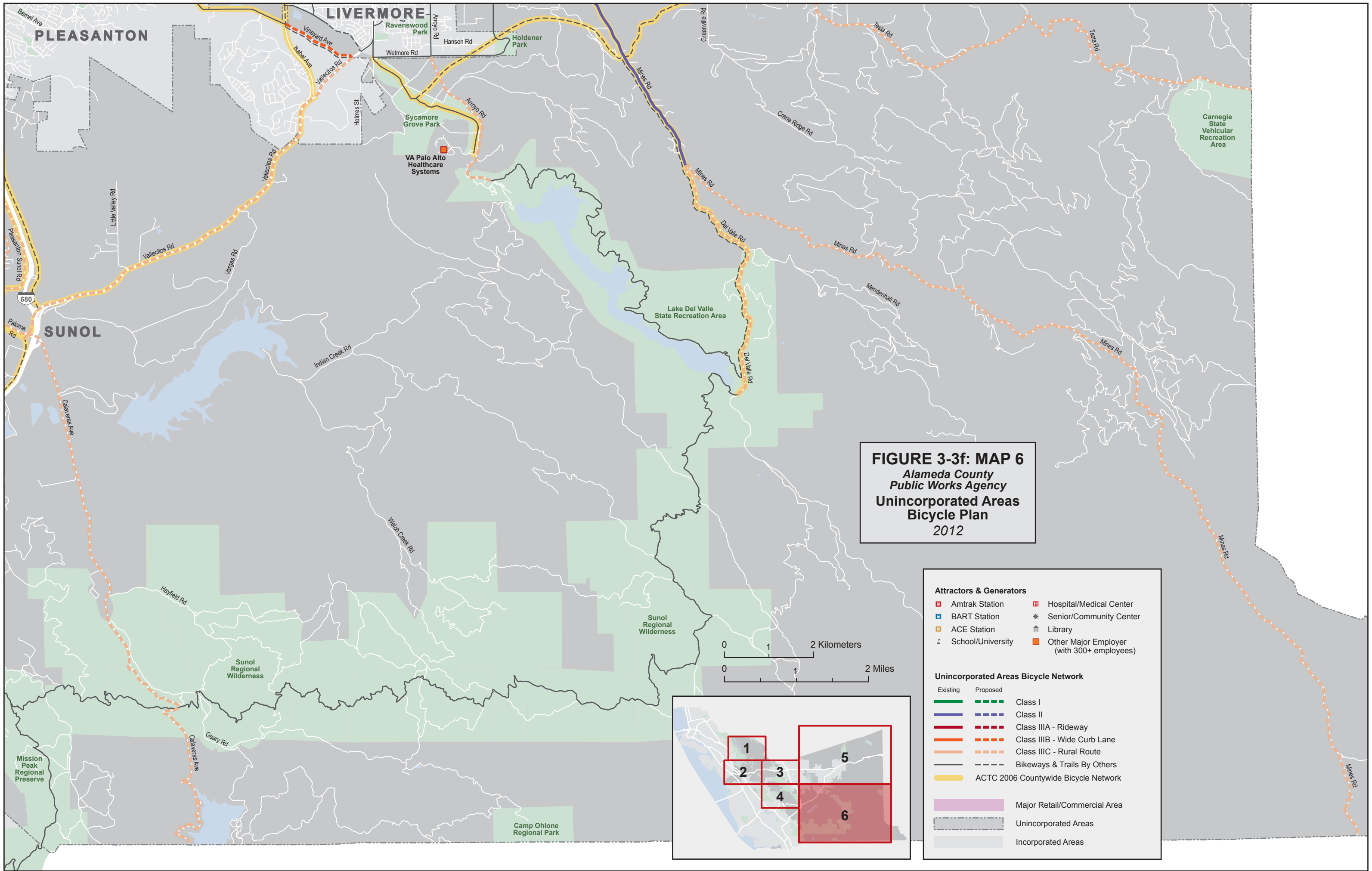


FIGURE 3-3f: MAP 6
Alameda County
Public Works Agency
Unincorporated Areas
Bicycle Plan
 2012



Attractors & Generators

| | |
|-------------------|--|
| Amtrak Station | Hospital/Medical Center |
| BART Station | Senior/Community Center |
| ACE Station | Library |
| School/University | Other Major Employer (with 300+ employees) |

Unincorporated Areas Bicycle Network

| | | |
|----------|----------|--------------------------------------|
| Existing | Proposed | Class I |
| Existing | Proposed | Class II |
| Existing | Proposed | Class IIIA - Rideway |
| Existing | Proposed | Class IIIB - Wide Curb Lane |
| Existing | Proposed | Class IIIC - Rural Route |
| Existing | Proposed | Bikeways & Trails By Others |
| Existing | | ACTC 2006 Countywide Bicycle Network |

Major Retail/Commercial Area

Unincorporated Areas

Incorporated Areas

